



AssetWhere™ Newsletter

In this issue: *New AssetWhere and StudentWhere Sites, Investing for the Future, AssetWhere Web, Upcoming Events, Current Promotions*

Investing for Future Management

Fraser Coast Anglican College (FCAC) in Hervey Bay, Qld have, like many Schools and Colleges across Australia, received funding from the Federal Government under the BER program. With this funding FCAC have completed construction of two new buildings, a Library and a Language Centre .

To ensure that the newly constructed facilities were documented accurately for future management, FCAC allocated funding to record all the information about the new buildings. This information is being stored within the AssetWhere and fmXpert software solutions provided by OMNILINK.

The benefit to FCAC is that the monies used under the BER provided an immediate return on investment as information about the whole College (not just the new buildings) is now recorded for on-going management and maintenance activities. It will also allow FCAC to accurately assess the performance of the new infrastructure which is of key interest to the Federal Government in understanding that a durable and sustainable asset was provided to the College.

New AssetWhere Sites

West Moreton Anglican College (located 10 minutes from Ipswich in Queensland) completed the installation of AssetWhere in December which included all the College's buildings, landscaping and underground services. An intensive Data Investigation found plans for all buildings, as either CAD files or paper drawings.

AssetWhere will be utilised to help locate and record underground services and other infrastructural assets. This will help avoid re-occurrences of the costly breakages and disruption of school activities that the College has recently experienced due to the lack of appropriate infrastructure information. Construction for a new Multi Purpose Hall has begun and when completed OMNILINK will incorporate the plans into AssetWhere.

StudentWhere was also implemented and this will support the College's initiatives in the areas of enrolment planning, student transport and SES funding applications. OMNILINK has mapped student locations and transport options and a Census module is being incorporated.

Te Puke High School is a midsized high school located south of Tauranga in the picturesque Bay of Plenty, New

Zealand. Due to a combination of rapid roll growth, leaky buildings and replacement buildings, the school is embarking on a ambitious redevelopment of the campus and sports grounds.

OMNILINK was approached to assist the school with implementing an asset and facilities management solution that would support their property portfolio.



The project began in November with the implementation of AssetWhere to map and record key building and services data. fmXpert was then introduced for managing all the school facilities, including: maintenance requests, a comprehensive asset register and project management. fmXpert interfaces with the schools accounts ensuring

accurate and seamless recording of critical information at a single point of entry. fmXpert is now being used to manger the preventative maintenance of systems and assets throughout the school. Staff now log maintenance requests via the school Intranet directly into fmXpert. The school has recently began to utilise fmXpert for periodic distribution and return of ICT equipment, meaning that the school has accurate real-time tracking of ICT equipment throughout the school at any time.



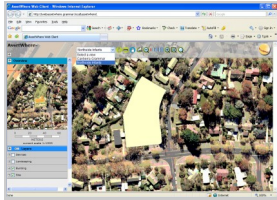
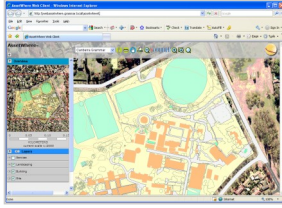
The Journey Begins

The journey has begun for a number of Schools across Australia and New Zealand, with the Data Investigation Phase being conducting as part of the AssetWhere implementation. Schools including MacKillop Catholic College (ACT), The Southport School (QLD), St Hilda's School (QLD), Coomera Anglican College (Qld), Burnside High School (NZ), and Rongotai College (NZ), currently have or are about to have our staff crawling over CAD drawings, paper plans and the all important "pool of local knowledge" within the School and its consultants and contractors. The data investigation reviews all relevant data sets and compiles a report and set of recommendations for the school. Many Schools have recognised the importance of identifying a consistent set of information to provide them with the best quality framework to build a successful implementation of AssetWhere.

If you would like to find out more about what an AssetWhere Data Investigations involves please email OMNILINK

AssetWhere Web

Canberra Grammar School, an Anglican Day and Boarding School from preschool to year 12 are the first school to have purchased and installed the AssetWhere Web module. OMNILINK completed their installation in late November and the school had a successful rollout in December to staff via their Schools Intranet site. The installation was completed remotely and all data from their AssetWhere system has also now been uploaded into AssetWhere Web.



A number of schools will be installing AssetWhere Web over the coming month as it provides a cost effective solution for their staff to easily view their schools data such as drainage, services, easements and room locations whilst performing work around the grounds and buildings. Once AssetWhere Web is fully utilised by these schools it will lead to valuable time and money saving by the school, whilst keeping their data integrity.

Events

OMNILINK have conducted **AssetWhere Forums** in Sydney, Melbourne and Brisbane throughout February and March. These forums have been very well received with a great number of existing and new schools attending. The forums have covered a number of areas including new products - AssetWhere Web and soon to be released AssetWhere PDF. Brisbane schools were also able to hear first hand in the presentation by David Foreman from Brisbane Girls Grammar School on how AssetWhere was used to compile information for their Cleaning Tender, saving David and his team valuable time.

The **Auckland AssetWhere Forum** is being held on the **16th March**, with many schools in New Zealand attending. To register for the New Zealand Forum [click here](#).

OMNILINK will also be attending the following conferences over the next few months so make sure stop by our stand.

ASBA Vic	26-28 May
ASBA Qld	9-11 June
NZSEO	14-16 July
ASBA Tas	5-6 August
ISNZ	27-28 August

We regularly update our event list on the OMNILINK website. So keep checking the [website](#) to see where we will be in 2010. OMNILINK welcomes any invitations to present and attend industry events. Please email [OMNILINK](#) with any requests.

Current Promotions

AssetWhere™ Web only \$5,000 ex GST* until 31st March 2010

AssetWhere Web—Reasons why it makes sense!

- An **inexpensive** investment to give **unlimited** access to your property data internally
- Enables users to query map based information, linking graphical data to attribute information
- Keeps **data integrity** throughout your school as users can only query and view the data, and are not able to edit the data
- Effortless for users to use with simple and uncomplicated toolbars
- Runs on your school Intranet
- Installation can occur remotely

For more information on this offer please contact [OMNILINK](#)

Terms and Conditions: Introductory Offer only available to schools who have previously purchased or are purchasing AssetWhere Desktop. Orders to be received by 31st March 2010 to qualify for Introductory pricing, thereafter price will be \$8,000 ex GST. Annual User Support and Software Maintenance of \$1,000 ex GST applies. If On site Installation is required or preferred an additional one day consultancy fee will apply (\$1,200 ex GST plus travel costs);

Contact [OMNILINK](#) to learn more about **AssetWhere**

OMNILINK is a long term sponsor of ASBA in Australia and New Zealand.



Toll Free
Email
Web

AUSTRALIA

ABN 80 056 793 723

1800 651 291
omnilink@omnilink.com.au
www.omnilink.com.au

NEW ZEALAND

0800 6664 5465
info@omnilink.co.nz
www.omnilink.co.nz

CANBERRA MELBOURNE SYDNEY ALBURY AUCKLAND HONG KONG



OMNILINK

• INTEGRATE • INTERACT • INFORM