



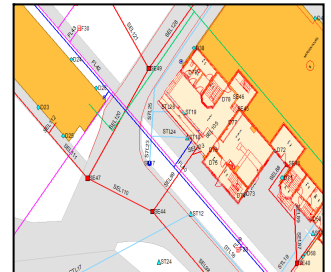
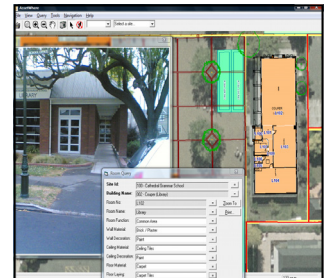
# AssetWhere™ Forum Melbourne 2nd March 2010

You are invited to OMNILINK's AssetWhere Forum being held in  
**Melbourne on the 2nd March 2010 at 4.00pm to 5.30pm.**

Come, discover and learn about AssetWhere and how it can increase the return on investment of your assets and add value to your facilities, and reduce expensive down time.

## Draft Agenda:

- ⇒ AssetWhere overview and functionality including locks and keys, fire evacuation, conditional module and more
- ⇒ AssetWhere Web
- ⇒ School Case Study
- ⇒ fmXpert update - fmEssentials
- ⇒ What is coming in the next version of AssetWhere
- ⇒ Networking



**Location:** OMNILINK Melbourne Office  
Level 4, 150 Albert Road,  
South Melbourne ([Directions](#))

**Registration:** Either complete the attached form and fax back to 02 9804 7901 or register on line [here](#).

**Please register by the 23rd February**



Toll Free  
Email  
Web

### AUSTRALIA

ABN 80 056 793 723

1800 651 291

[omnilink@omnilink.com.au](mailto:omnilink@omnilink.com.au)

[www.omnilink.com.au](http://www.omnilink.com.au)

### NEW ZEALAND

0800 6664 5465

[info@omnilink.co.nz](mailto:info@omnilink.co.nz)

[www.omnilink.co.nz](http://www.omnilink.co.nz)

CANBERRA MELBOURNE SYDNEY BRISBANE ALBURY NEW ZEALAND HONG KONG



# OMNILINK

• INTEGRATE • INTERACT • INFORM



# Registration Form Melbourne 2nd March AssetWhere Forum

**Date & Time:** 2nd March 2010 at 4.00pm

**Location:** OMNILINK Melbourne Office  
Level 4, 150 Albert Road,  
South Melbourne

**School or College:** \_\_\_\_\_

**Name:** \_\_\_\_\_

**Position:** \_\_\_\_\_

**Contact Phone:** \_\_\_\_\_

**Contact Email:** \_\_\_\_\_

**Additional Attendees:**

Name:	Position

Please fax back to **02 9804 7901** or email to  
[alisona@omnilink.com.au](mailto:alisona@omnilink.com.au) by the 23rd February 2010



CANBERRA MELBOURNE SYDNEY BRISBANE ALBURY NEW ZEALAND HONG KONG

