



# OMNILINK

• INTEGRATE • INTERACT • INFORM

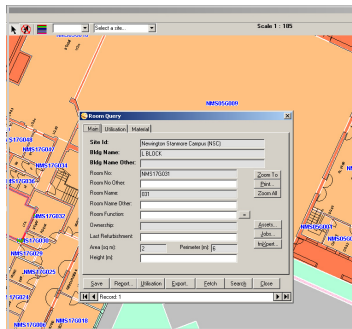
September 2010

## AssetWhere™ Newsletter

**In this issue: AssetWhere V3.5, Synergetic / fmXpert Interface, StudentWhere  
New AssetWhere, StudentWhere and fmXpert Sites, Events...**

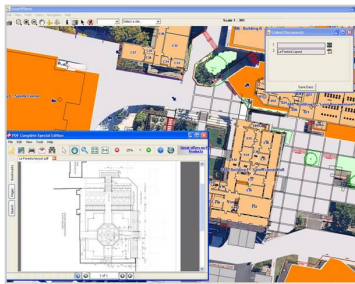
### New Release: AssetWhere V3.5

OMNILINK's Development Team has been hard at work developing new features and enhancements for AssetWhere V3.5. The majority of these enhancements and new features have been ideas and requests submitted by current and future AssetWhere users.



With the release date scheduled for the 11th of October, the new version of AssetWhere is set to allow more user control, provide upgraded printing outputs and quality, as well as:

- Zoom to All Function
- Search Function
- Updated Room Query Forms to include
  - Height for rooms and buildings
  - Utilisation (to assist with grant funding)
  - Year Constructed and Refurbished field
  - More editable Details fields in forms
  - Depth Field for Underground Services



Also added to AssetWhere V3.5 is the ability to link in and view multiple documents, spreadsheets, videos, audio and PDF files along with the standard photos already available..

To find out more about AssetWhere V3.5 come along to one of our AssetWhere User Forums being held in October ([click here for details](#)), download the AssetWhere V3.5 Fact Sheet or contact [OMNILINK](#).

### Synergetic / fmXpert Interface

OMNILINK in association with Synergetic Management Systems and FM Essentials has released the Synergetic / fmXpert interface which connects the property management transactions of fmXpert to Synergetic Financials.

This exciting new interface will allow property transactions such as the creation of purchase orders to be directly connected to the financial management system. This avoid the duplication of data and paper based systems allowing for shard budgetary information amongst staff. Another main feature of this interface is the automatic synchronisation of account codes and vendor details from Synergetic to fmXpert.

For more information on this interface please contact [OMNILINK](#), you can also download the Synergetic / fmXpert Fact Sheet [here](#).

### StudentWhere - adding the Where factor

Do you know where all your Students are? Do you know where your Bus Routes run? Do you want to market to target areas to increase enrolment numbers? If you have answered Yes to any of these questions then your school can benefit from StudentWhere.

StudentWhere is a simple, easy to use application that allows you to visually locate all your students directly from your current enrolment system to enable the school to analyse 'where' the student concentration is. It will also assist with bus route planning, allowing school to amend or create routes and then produce maps for bus contractors and parents.

[Click here](#) to download the StudentWhere Brochure.

## New AssetWhere Sites

**Ipswich Grammar School** completed the installation of AssetWhere, fmXpert and StudentWhere in August which included all the school's buildings, landscaping and underground services. With a school that is a 150 years old an intensive 4 day Data Investigation was conducted. OMNILINK found plans for all of the buildings as either CAD files or paper drawings (except for just two maintenance sheds).

AssetWhere will be utilised to help locate and record underground services and other infrastructural assets. This will help avoid re-occurrences of costly breakages and unplanned disruption of school activities, often due to a lack of reliable infrastructure information.

With the school running a number of their own buses StudentWhere was implemented to support initiatives in the areas of enrolment planning, student transport and SES funding applications. OMNILINK has mapped student locations and transport options and a Census module has been incorporated.

fmXpert was also installed and was introduced for the management of the schools facilities, including: maintenance requests, a comprehensive asset register and project management. fmXpert will interface with the schools accounts ensuring accurate and seamless recording of critical information at a single point of entry. fmXpert is being used to manage the preventative maintenance of assets throughout the school.

A number of other schools have also implemented AssetWhere or have completed a Data Investigation in the past few months. These include Mount Alvernia (Qld), Prince of Peace Lutheran (Qld), Wellington East Girls' Schools (NZ) and St. Oran's College (NZ).

## Events

Over the past few months OMNILINK has attended many of the Australian State based ASBA Conferences, with Tasmanian and Western Australia being the first time we have attended as a sponsor to these events.

The interest in AssetWhere for Property Management and Facilities Management at all of these events has been overwhelming, with the concept of recording and managing schools property and asset data being a higher priority, mostly as an outcome of all the construction that has occurred over the past 18 months. OMNILINK was also an exhibitor and sponsor at the NZSEO Conference in July and the ISNZ Conference in August.

### Upcoming events:

- CEBA Conference 29th September - 1st October
- AssetWhere V3.5 Forum Sydney 11th October
- AssetWhere V3.5 Forum Brisbane 12th October
- AssetWhere V3.5 Forum Melbourne 13th October
- AssetWhere V3.5 Forum Auckland & Wellington TBC

Please visit our [website](#) for more information. OMNILINK welcomes any invitations to present and attend industry events. Please email [OMNILINK](#).

Contact [OMNILINK](#) to learn more about **AssetWhere**

*OMNILINK is a long term sponsor of ASBA in Australia and New Zealand.*



Toll Free  
Email  
Web

### AUSTRALIA

ABN 80 056 793 723

1800 651 291

[omnilink@omnilink.com.au](mailto:omnilink@omnilink.com.au)

[www.omnilink.com.au](http://www.omnilink.com.au)

### NEW ZEALAND

0800 6664 5465

[info@omnilink.co.nz](mailto:info@omnilink.co.nz)

[www.omnilink.co.nz](http://www.omnilink.co.nz)

CANBERRA MELBOURNE SYDNEY ALBURY AUCKLAND HONG KONG



# OMNILINK

• INTEGRATE • INTERACT • INFORM