

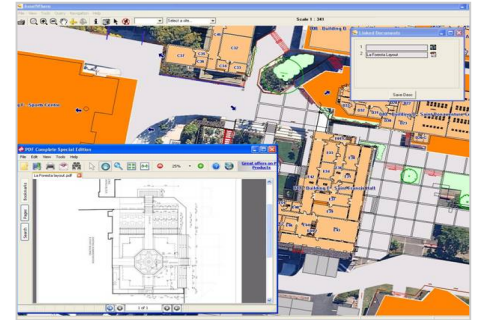
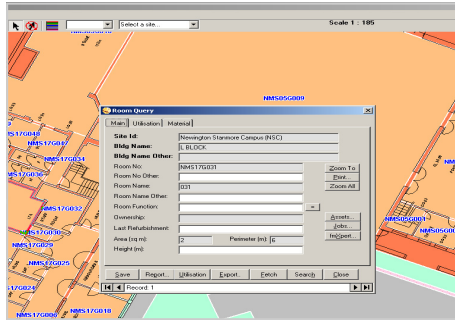


# AssetWhere™ V3.5

## New Features Fact Sheet

**AssetWhere™ New Features — Designed by school property professionals**

**OMNILINK** is pleased to announce the release of AssetWhere V3.5, the latest upgrade for the school property management system used by leading schools in Australasia. This release is a result of significant user input and collaboration with OMNILINK staff.



### AssetWhere™ New Features

OMNILINK's Development Team has been hard at work developing new features and enhancements for AssetWhere V3.5. The majority of these enhancements and new features have been ideas and requests submitted by AssetWhere users. The new version of AssetWhere allows more user control, upgraded printing outputs and quality, as well as:

- Zoom to All Function
- Search Function
- Updated Building and Room Query include:
  - ◆ Height
  - ◆ Utilisation (can assist with grant funding)
  - ◆ Year Constructed and Refurbished field
  - ◆ Fully editable Details fields
  - ◆ Depth Field for Underground Services

Also added to AssetWhere V3.5 is the ability to link in and view multiple documents, spreadsheets, videos, audio and PDF files along with the standard photos already available. See overleaf for the full list of new features...

### Synergetic / fmXpert Interface



OMNILINK in association with Synergetic Management Systems and FM Essentials has released the Synergetic / fmXpert interface, which connects the property management transactions of fmXpert to Synergetic Financials. AssetWhere is already integrated to fmXpert.

This exciting new interface will allow property transactions such as the creation of purchase orders to be directly connected to the financial management system. It will avoid the duplication of data and paper based systems allowing for shared budgetary information amongst staff. Another main feature of this interface is the automatic synchronisation of account codes and vendor details from Synergetic to fmXpert.

For more information on this interface please contact **OMNILINK**. The Synergetic / fmXpert Fact Sheet is available for download [here](#).

**For more information about AssetWhere V3.5 please email:**

In Australia: Alison Allan [alisona@omnilink.com.au](mailto:alisona@omnilink.com.au) / In NZ Philip Caunter: [philipc@omnilink.co.nz](mailto:philipc@omnilink.co.nz)



Toll Free  
Email  
Web

**AUSTRALIA**  
ABN 80 056 793 723

1800 651 291  
[omnilink@omnilink.com.au](mailto:omnilink@omnilink.com.au)  
[www.omnilink.com.au](http://www.omnilink.com.au)

**NEW ZEALAND**

0800 6664 5465  
[info@omnilink.co.nz](mailto:info@omnilink.co.nz)  
[www.omnilink.co.nz](http://www.omnilink.co.nz)



# AssetWhere™ V3.5

## New Features Fact Sheet

### AssetWhere V3.5 - New Features

AssetWhere V3.5 includes many new features as a result of user input and development ideas from OMNILINK.

#### Upgraded Printing Outputs (user suggestion)

- We have upgraded the output quality of the printing enormously. Using new embedded PDF creation technology, all outputs are now in crystal-clear quality.

#### More Data, More Control (user suggestion)

- The Query functions with selection tabs have been upgraded to allow users to store more data, and to interact, alter and report on that information with more freedom. Many existing fields have been 'unlocked' for free editing, and the update includes:
  - ◆ New "Year Constructed" and "Last Refurbishment" date fields
  - ◆ New "Height" field for walls and buildings.
  - ◆ The new Utilisation Tab will allow users to record the utilisation (Primary/Secondary) for each space, and produce reports for this.
  - ◆ A more comprehensive list of construction and decoration materials.
  - ◆ New, fully editable "Details" fields for Wall and Ceiling Decoration and Floor Laying information such as Paint and Carpet colours.
  - ◆ New, fully editable "Comments" field for any extra information the user may wish to record.
  - ◆ New "Depth" field for underground services.

#### Upgraded Hotlinks Tool (user suggestion)

- We are now able to attach multiple file types as hotlinks. As well as the standard photos, users are now also able to view documents, spreadsheets, videos, audio and PDF files.

#### Upgraded Ruler Tool (OMNILINK suggestion)

- We have improved the ruler tool in v3.5 by visualising on the map each of the line segments, and giving each segment its own measurement, as well as the total distance. The user can make multiple measurements, and they are now also printable.

#### Improved legend (user suggestion)

- The restriction of 10 maximum entries in the legend has been removed. More space has been given to the legend in the map output.

#### Zoom to All (OMNILINK suggestion)

- A new function - The "Zoom to All" records (be they buildings, rooms or services) has been added. This allows the user, once a query has been run, to zoom the map to all of the features that have been returned in this query.

#### Search function (user suggestion)

- The search function in all query forms has been remodelled to make it easier to use. Ability to export to MS Excel.