



# OMNILINK

• INTEGRATE • INTERACT • INFORM

## November 2009 Newsletter

In this issue: *AssetWhere*, *Asset Condition Assessment*, *Fire Evacuation Maps*, *AssetWhere Web*

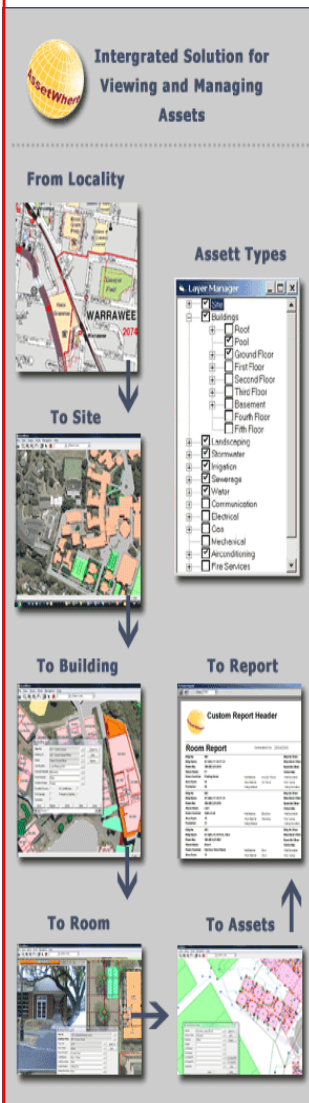
### AssetWhere™ School Asset Property Management System

#### Building the Education Revolution — Building Infrastructure Knowledge

Many schools across Australia are benefiting from the Federal Government's BER program through significant building developments — multi-purpose halls, gymnasiums, library's, science and language centres as well as classroom upgrades and refurbishments. These developments are progressing at a rapid pace and as projects are completed the key information to operate and connect to the existing infrastructure is often handed over as a paper drawing. Given the modern technology many of these buildings now utilise, a paper drawing hardly seems appropriate. The new way to commission this infrastructure knowledge into the property portfolio is to turn data into information with *AssetWhere™*—the *School Asset Property Information System*. A number of our clients are basing their compliance with the documentation requirements of the BER funding on using a percentage of contingency funding to assist with the implementation of this data into *AssetWhere™* - to create an electronic record/document of the new infrastructure. Similarly, Schools considering implementing *AssetWhere* may find that contingency funding can be used to assist with the initial commissioning of *AssetWhere™* for not only the new buildings but also the surrounding infrastructure.

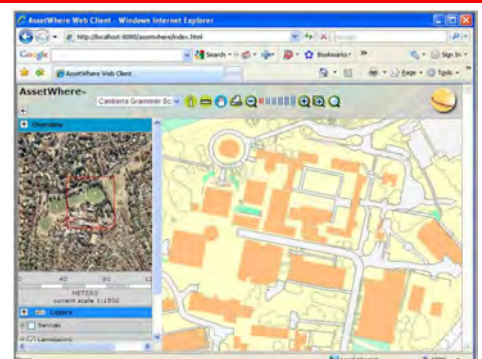
Schools utilise many other sophisticated information management systems for financial and student data. OMNILINK developed *AssetWhere™* to bring property data to the same level. A school's property and infrastructure services are critical to the success of school organisation and student achievement. One failure, such as a contractor cutting a gas pipe or IT network, could render the school unable to operate. *AssetWhere™* means the school can react to issues and plan for new development / refurbishments with confidence.

Many schools are reliant on external consultants and contractors to understand their property. By collating and consolidating information (commonly from paper drawings, CAD files, spreadsheets) OMNILINK helps the school to be the centre of its own property knowledge and to maintain information continuity into the future regardless of staffing and external consultants. With *AssetWhere™* we deliver a corporate and enduring knowledge base that becomes the natural place to store, compare and retrieve property and asset related data.



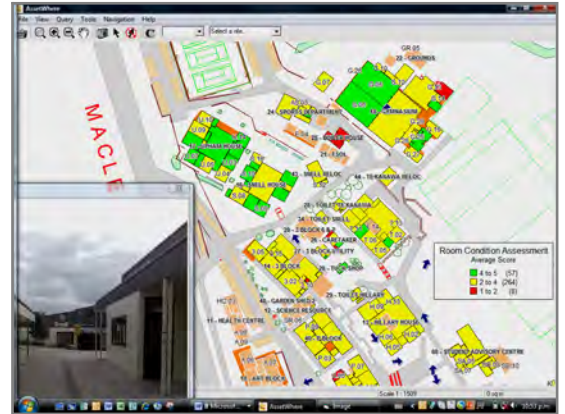
**AssetWhere Web™** — Through a project started with Canberra Grammar, AssetWhere is about to be released as a Web version. This would allow access to users across multiple locations, plus share property related data with external contractors and consultants.

AssetWhere Web is an extension to AssetWhere 3.1 software. The data and maps are implemented as they are now. AssetWhere Web is being tested and is scheduled to be available in December.



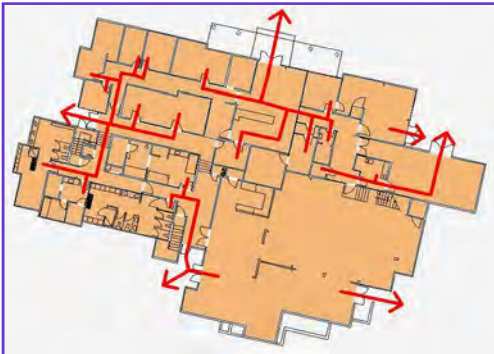
**Asset Condition Assessment** — AssetWhere™ now includes new functions to assess the condition of rooms and building assets. Using colour coded maps property managers can now clearly visualise the state of their property portfolio for better maintenance planning and funding proposals.

OMNILINK worked with Macleans College (Auckland) to develop the new functionality as an extension to AssetWhere. Using survey forms the College undertook a condition inspection of all rooms and buildings, broken down into detailed categories. The Condition Assessment Module includes functions to automatically load these scores into AssetWhere. Scores are calculated for rooms, buildings or individual asset types i.e. a room, the building exterior, or a specific asset like carpet. The outputs are detailed reports by room and building, and 'colour-coded' maps shows areas requiring maintenance investment.



The AssetWhere Condition Assessment Module is an extension to AssetWhere Version 3.1. It is licensed separately, and requires AssetWhere 3.1 to be installed first. The module is priced at \$2,500 (ex GST) per site (plus installation). Installation, testing and training can be completed within one day by OMNILINK, then allowing your staff to collect and map the condition data.

**Fire Evacuation Routes** — OMNILINK are now implementing Fire Evacuation Diagrams as an additional layer within AssetWhere. The example to the right shows the possible evacuation routes for the ground floor of a building.



As well as the evacuation routes a number of schools are also including other data such as: designated exit doors, smoke stop doors, illuminated exit signs, fire call points, fire extinguishers, door swings and lock details. At the site level, a diagram to show the fire assembly areas can also be produced.

Your feedback on additional information your school would like to include in a Fire Evacuation layer is appreciated. Please email [OMNILINK](mailto:omnilink@omnilink.com.au) with your interest and feedback.

Contact OMNILINK to learn more about **AssetWhere**

*OMNILINK is a long term sponsor of ASBA in Australia and New Zealand.*



Toll Free  
Email  
Web

**AUSTRALIA**

ABN 80 056 793 723

1800 651 291

[omnilink@omnilink.com.au](mailto:omnilink@omnilink.com.au)

[www.omnilink.com.au](http://www.omnilink.com.au)

**NEW ZEALAND**

0800 6664 5465

[info@omnilink.co.nz](mailto:info@omnilink.co.nz)

[www.omnilink.co.nz](http://www.omnilink.co.nz)

CANBERRA MELBOURNE SYDNEY BRISBANE ALBURY NEW ZEALAND HONG KONG



**OMNILINK**

• INTEGRATE • INTERACT • INFORM