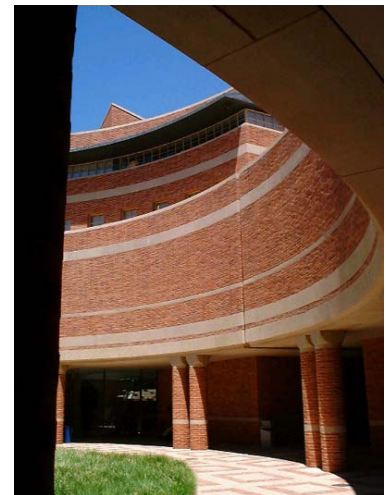
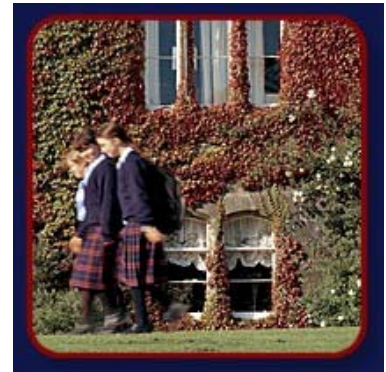




OMNILINK

*Linking People
and Information*

**INCREASE THE
RETURN ON
INVESTMENT
OF YOUR ASSETS
& ADD VALUE TO
YOUR
EDUCATION
FACILITIES
USING
ASSETWHERE™**



*The efficient management of campus resources
is a major factor in any ongoing financial success.
AssetWhere™ helps to visualise underground services,
landscaping, room / building layouts and features, and other
physical assets as the campus property management system.*

CAMPUS PROPERTY MANAGEMENT SYSTEM



AssetWhere™ Case Study

Scenario: You need to excavate to replace some old pipes that have broken. The last time, your backhoe driver also excavated some telecommunication cables that cost thousands of dollars to repair and a few days in downtime of phones and internet, almost bringing the campus to a standstill. This happened because you couldn't locate WHERE your underground assets were. You're not even sure if the pipes are stormwater, sewer or water supply.



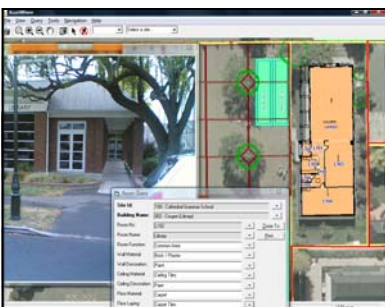
Solution: With **AssetWhere™** you can easily find WHERE both the pipes and cables are, what type of pipes they are, supply a location plan, and advise the excavation contractor to hand dig in this location. All done without the need to pay consultants, or pull out unreliable and outdated paper plans.

The Business Value of AssetWhere™



- **Assets are shown on a map image** – combining plans, data, information and human knowledge, enabling you to “see the full picture”.
- **Easy, immediate and accurate** recognition and location identification with ability to relocate assets simply and quickly.
- **Full Asset Database functionality** – providing detailed asset information, dimension attributes, condition reports, documents and photo storage.
- **Multi-scale view** – zoom from locality, to site, to building, to room, to asset, and see only what you need to see. Set the scale to suit your project.
- **Site and asset layer hierarchy structure** – for clear identification of, fast and easy access to, site and asset categories, such as building, level or room, and stormwater, sewerage, communications, electrical, etc. Select just what you need for your project.
- **Fast action in an emergency or breakdown** situation with assets easily locatable and identifiable.

The Financial Value of AssetWhere™



- Asset information **centrally stored**, updated and shared. The institution becomes the centre of its own information. Best practice records management.
- **Compliance with regulatory requirements**, such as Fire Safety, Workplace Occupational Health and Safety, and **easier reporting**.
- **Reduced human risk and financial liability** from damaged infrastructure and utilities services, such as electricity, gas lines, water and sewerage pipes.
- **Reduction in insurance premiums** through better risk management.
- **Higher availability** of classrooms and facilities through better asset management and maintenance planning.
- **Staff and student protection** from dangerous sites and situations.
- Information **requests quickly and easily serviced to regulators**, including Fire Brigade, Council, Utilities providers, etc.
- **Online access** to location, condition, value and usage status of your resources.
- **Proactive maintenance** with the ability to view current condition assessment.
- **Reduced risk** of damage to infrastructure and services. Saves real money!

DEMONSTRABLE BENEFIT-COST ADVANTAGE

The Challenge

Campus assets encompass a wide range of items including property, buildings, landscaping, communications lines and underground services and their connection or access points, mechanical services, regulatory appliances and much more. These are not always obvious to find, but are located all over – and under – a campus site and structures.

Managing large amounts of asset information manually is labour intensive, often difficult, time consuming and costly. Often, knowledge of the property's infrastructure has been acquired over many years and is stored in numerous formats in separate locations, or retained only in the minds of individuals – the dozens of contractors, consultants and staff tradespeople. The inability to access this pool of information quickly, easily and, most importantly, accurately from a single point to “see the full picture” will increase the cost and risk on decisions related to property management activities.

The Solution — AssetWhere™

AssetWhere™ is a map-based information software tool that provides a user-friendly, intuitive interface for the management of all of your asset and property information, easily customised for the needs of your organisation.

AssetWhere™ enables users to:

- select maps and easily generate reports on chosen items through point-and-click functionality.
- Print maps to scale that display assets of particular interest for a given project or issue.
- zoom in and out from locality to a specific site, building or room for inspection.

With AssetWhere™, you can plan maintenance programmes by identifying and locating assets past their normal life using the simple query builder, saving you time and money.

AssetWhere™ allows you to bring together various information and data formats, scales and media, into a map, giving control over your asset and property information back to you. AssetWhere™ also provides all the benefits gained from consolidating this volume of information into a single record, able to be accessed from multiple points, whilst giving you the flexibility to print or email maps for contractors and consultants. All information is securely stored.

Completing the solution, AssetWhere™ supports an interface to facilities management business applications resulting in a total solution that will increase the overall asset monitoring and management capabilities of your organisation.

OMNILINK manages the complete project from investigating the likely sources of asset data, converting paper drawings and CAD files into useable map layers, populating the AssetWhere™ system with your building names and room numbering, and providing on-site installation and training. User Support is available to ensure you get the most out of this investment. A service to update the map layers in AssetWhere™ is also available.

Integrated Solution for Viewing and Managing Assets



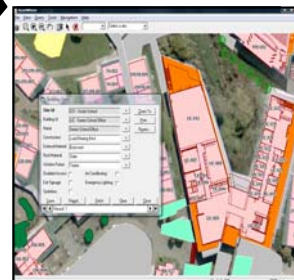
From Locality



To Site



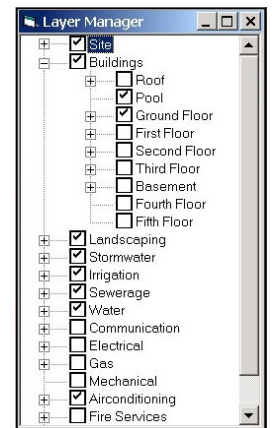
To Building



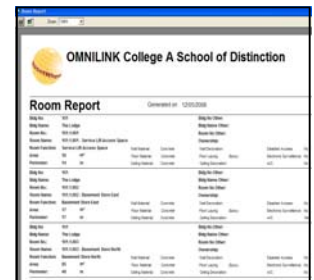
To Room



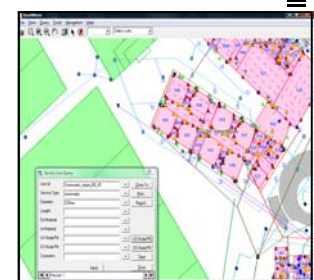
Asset Types



To Reports



To Assets





AssetWhere™ with fmXpert module

Add the comprehensive Facilities Management Maintenance Module — *fmXpert* — to your **AssetWhere™** Solution.

By adding fmXpert Module education institutions can now manage the maintenance tasks and planning more easily.

- Job and maintenance management made easy. Features such as fmXpert's simple work request system, job management workbench and maintenance scheduling enable you to increase the efficiency of your maintenance department, and track and cost jobs more efficiently.
- Enhance your planning and decision making process. Tools such as a multi-year budget report, and performance and condition histories can add value to your decision making process.
- See the big picture with maps and charts. Features such as the **AssetWhere™** mapping module aid in visualisation of your sites and assets, and provide a link between graphical information and attribute data.
- Access your information remotely via internet and PDA. Modules such as a web interface and PDA access provide greater flexibility, and increase the accessibility of your data.

fmXpert Work Request

Name: Bill Davis
 Phone No: 03 9416 2883
 Email: bill@fmxpert.com.au
 Site / Building: Pyralis Lakes College
 Code: Library
 First floor - P1002R02-R1002R02
 Description: Always too hot in this room!

Submit Request Clear Request



Ten Year Plan - By Site and Building

Year	2007	2008	2009	2010	2011	2012	2013	2014	2015	2016
Assets/Projects										
Plant and Equipment	\$120	\$120	\$120	\$120	\$120	\$120	\$120	\$120	\$120	\$120
Maintenance	\$120	\$120	\$120	\$120	\$120	\$120	\$120	\$120	\$120	\$120
Projects	\$120	\$120	\$120	\$120	\$120	\$120	\$120	\$120	\$120	\$120

Add AssetWhere™ to your existing financial management system

AssetWhere™ can integrate with existing financial management systems. **AssetWhere™** is built upon a SQL database thus enabling seamless integration to other systems.

MANAGE COSTS AND CONTRACTORS MORE EFFECTIVELY

Contact OMNILINK to learn more about **AssetWhere™** and fmXpert. We can arrange an on-site demonstration.



OMNILINK

LINKING PEOPLE AND INFORMATION

AUSTRALIA

ABN 80 056 793 723

Toll Free

1800 651 291

Email

omnilink@omnilink.com.au

Web

www.omnilink.com.au

NEW ZEALAND

0800 6664 5465

info@omnilink.co.nz

www.omnilink.co.nz

CANBERRA MELBOURNE SYDNEY BRISBANE ALBURY NEW ZEALAND HONG KONG

SPECIALISTS IN ENTERPRISE DATA AND SPATIAL BUSINESS SOLUTIONS