



# OMNILINK

• INTEGRATE • INTERACT • INFORM

## The effectiveness of your Schools AssetWhere system is only as good as the currency of the data it stores.

The AssetWhere™ Data Management Service will provide an ongoing update service, to keep your school's building and services details within AssetWhere™ current, as well as maintaining an off site complete dataset of all your schools AssetWhere Data which is an added security feature.

### **Benefits of a Data Management Service:**

- ◆ 6 hours per month for data updates (72 hours per annum)
- ◆ Costs reduced
- ◆ Added Security
- ◆ Time saved
- ◆ Current Information
- ◆ Maintain User Trust

### **Included in the Data Management Service are:**

- ◆ Minor alterations to room walls including wall moved, removed, added or changed Door closure, change or addition Window closure, change or addition
- ◆ Minor alterations, additions or deletions of site features such as services, assets, landscaping, property easements or boundaries
- ◆ Removal of buildings that have been demolished and placing these within the AssetWhere Historical Layer Update of aerial photo (biannually), not including cost of the aerial photograph
- ◆ Update of street directory backdrop (biannually), not including the cost of the street directory data
- ◆ Site photos either updated or additional ones added.

### **\*Not included:**

- ◆ Refurbishment of whole buildings or a significant part of a building
- ◆ New buildings and property
- ◆ Major service installations, replacement or repairs
- ◆ Major site surveys
- ◆ Where no photo layer exists, any site photos
- ◆ On-site support for AssetWhere™ users
- ◆ On-site training for new AssetWhere™ users.

*\*These non-inclusions can still be provided as a separate consulting service.*

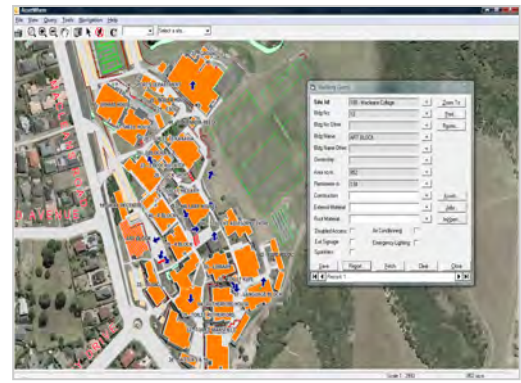
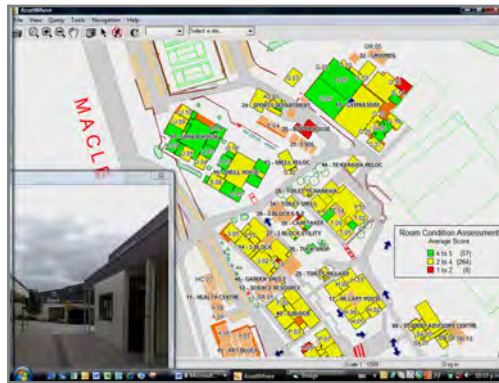
# AssetWhere Data Management Service Agreement End of 2009 Special

Purchase and sign an AssetWhere Data Management Service Agreement before end of December 2009, to start at the 1st January 2010 and receive **TWO FREE** Hours of credit **PER MONTH** for THREE months.

This means you will receive an Additional **6 FREE hours** for use in your first 3 months\*, giving you 24 hours to use between January and March 2010.

*\*The 6 free hours must be used before 31st March 2010 or they will be forfeited. The normal 18 hours can be carried over as per the Data Management Service Agreement*

For more information or to sign up for a Data Management Service Agreement, please contact Omnilink on 02 9804 8807 or email Alison Allan at [alisona@omnilink.com.au](mailto:alisona@omnilink.com.au)



Contact OMNILINK to learn more about **AssetWhere™**  
For all Support queries email [support@omnilink.com.au](mailto:support@omnilink.com.au) or  
log your query at [www.omnilink.com.au/support.htm](http://www.omnilink.com.au/support.htm)



Toll Free  
Email  
Web

#### AUSTRALIA

ABN 80 056 793 723

1800 651 291  
[omnilink@omnilink.com.au](mailto:omnilink@omnilink.com.au)  
[www.omnilink.com.au](http://www.omnilink.com.au)

#### NEW ZEALAND

0800 6664 5465  
[info@omnilink.co.nz](mailto:info@omnilink.co.nz)  
[www.omnilink.co.nz](http://www.omnilink.co.nz)

CANBERRA MELBOURNE SYDNEY BRISBANE ALBURY NEW ZEALAND HONG KONG



# OMNILINK

• INTEGRATE • INTERACT • INFORM