



Social Aspects of Spatial Information

In dealing with spatial information, many organisations can lose sight of the impacts of Spatial Information on their stakeholders. There have been a number of papers and anecdotes that indicate that understanding the importance of this Information and the power of space generally can provide a source of power and leverage for individuals and organisations. For instance, Ken Sutcliffe, the TV sports presenter, recounted the occasion when he first met Kerry Packer in his office – Packer was seated behind a large desk situated on an elevated platform with a large, well-lit window behind him. The effect worked – Sutcliffe felt suitably diminutive. We have all experienced the effects of seating arrangements at business meetings.

Similarly, other instances of groups having Spatial Information that others don't have resulted in a loss of rights and / or power. Michel Foucault, the French philosopher, postulated that people's lives are inextricably linked to considerations of space – *'I think it is somewhat arbitrary to try to dissociate the effective practice of freedom by people, the practice of social relations, and the spatial distributions in which they find themselves. If they are separated, they can become impossible to understand. Each can only be understood through the other.'* and further *"space is fundamental in any exercise of power"*.

Information related to position of resources, groups of people and borders or boundaries between them not only determine rights and privileges but also often create conflict between people due to imbalances, prejudices or greed. Information about the geographic distribution of people can affect business and administrative decisions that directly affect people's lives and behaviour. The relationship between power and space is not limited to geopolitical or community affairs. The cost of daily living is related to location through such services as insurance, finance, travel facilities and provision of essential goods. The organisations that provide these goods and services hold information about the location of their markets, customers, suppliers and competitors.

Given that this information can affect people's lives, directly or indirectly, it is reasonable to expect that there should be responsibilities related to holding this information. Privacy principles are a requirement of government and breaches are penalised. Organisations need to understand how they might breach these principles by the information that they use, including spatial information. OMNILINK has researched this area of knowledge and can assist organisations to comply with regulatory requirements.

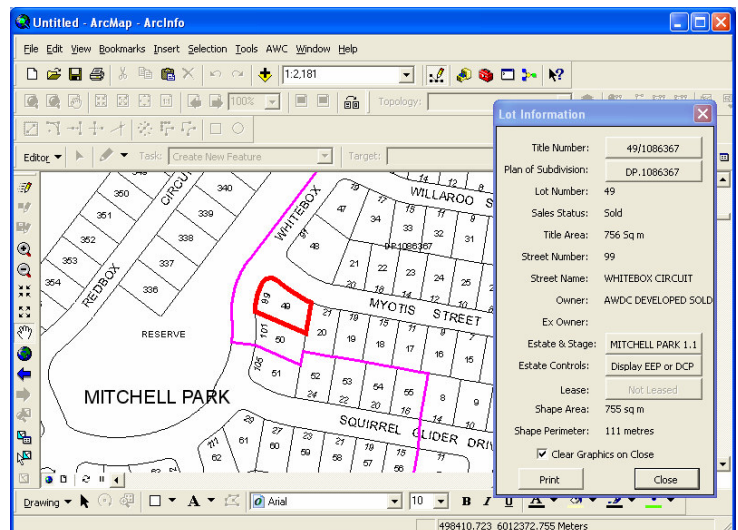
Ed Garvin
Managing Director

New ArcMap to TRIM Integration developed by OMNILINK

OMNILINK has developed a valuable system integration package that links ESRI's popular ArcMap GIS with the Tower Software's TRIM Records Management System. The system, developed for an OMNILINK Land Development client, enables ArcMap to directly input plans and metadata into TRIM. It also allows ArcMap to retrieve related documents from TRIM.

For example, a potential land buyer can click on a lot and display key information about it from the GIS. The buyer can then click on a button on the display to retrieve from TRIM other records related to the lot, such as the Land Title, the Plan of Subdivision, or the Estate Planning Controls.

If you would like more information on how the ArcMap-TRIM system could be applied in your organisation please contact us at OMNILINK.



IN THIS ISSUE

- ◆ ArcMap TRIM Integration
- ◆ New AssetWhere™ Sites— schools start implementations
- ◆ StudentWhere™ plans bus routes
- ◆ Condition Assessment of Buildings



New AssetWhere™ Sites

AssetWhere™ continues to be seen within the education sector as the premium business solution for property asset management.

New sites completing implementations are: **Canberra Grammar School, Padua College, St. Bede's College, Selwyn College** and **King's College**. All are installing AssetWhere Ver. 3.1.

Many more have started on the initial Data Investigation phase including: **Brisbane Girls Grammar School, St Josephs Nudgee College, St Andrews Anglican College, St Paul's School, Pinehurst School, St. Cuthbert's College** and **Diocesan School for Girls**.

This increasing awareness in AssetWhere has resulted in OMNILINK being invited to host a Workshop on Asset and Facility Management at the recent WA State Bursars Conference 2008 held in Bunker Bay, WA.

Ballarat GIS Spec

OMNILINK was selected by **Ballarat City Council** to develop a GIS specification for an enterprise GIS desktop and associated options for the server side solution and mobile mapping applications. The specification considered the organisation's business requirements with particular emphasis on integrating the spatial solution with existing property, assets and document management systems. Council's investment in spatial data was also reviewed to maximise the effectiveness of data management across any proposed solution.

StudentWhere™ helps plan bus route for Kristin

StudentWhere™ is being used by **Kristin School** to plan their bus routes ahead of the first term of 2009. By planning the bus routes now they can complete the commercial arrangements with bus companies and inform parents of the new routes buses will now travel. Parents will have access to route maps which will include the likely stop sites along the routes.

Kristin School proactively promotes the school bus service in order to provide a safe transport option and to reduce the number of vehicles entering the school site.

Vic CFA Spatial Strategy

OMNILINK was engaged by **Victorian Country Fire Authority** to develop a strategy for the development of its GIS system over the next five years. CFA has an existing GIS which is well utilised by its operations group, however the system needs further development to provide modern capabilities such as GIS Web Services and centralised data storage, and to extend spatial capability to other business systems such as Incident Management, Asset Management, and HR Management.

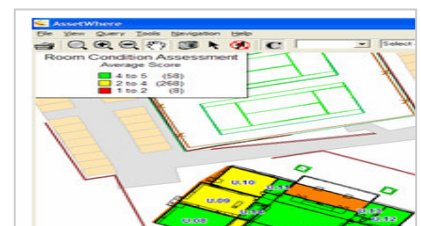
Our consultants conducted workshops, surveys and interviews to determine the spatial requirements of CFA. OMNILINK developed a strategy that includes detailed recommendations on system architecture and software, spatial data management and storage, data maintenance, web mapping technologies, modelling techniques and business systems integration.

New Asset Condition Assessment Module

In association with **Macleans College** (Auckland), OMNILINK have developed new functionality within **AssetWhere™** to assess the condition of buildings and rooms for funding submissions and development planning. Having already implemented AssetWhere, the College had a strong appreciation of their building assets but needed to assess the condition of buildings and rooms so as to help rank priorities and justify submissions. OMNILINK were approached to create a system to manage and report on the condition data. The aim was to create a tool that could be updated regularly, producing the latest condition report as required.

The College undertook a thorough condition inspection of all buildings and rooms, broken down into detailed categories. The Asset Condition Assessment Module includes functions to automatically load data into AssetWhere. Scores are calculated for buildings, rooms or individual asset types (carpet, roof material, etc). The outputs were detailed reports by room and building, and 'colour-coded' maps shows areas deserving of maintenance effort.

The Asset Condition Assessment Module is now available as a separate module for AssetWhere Ver. 3.1.



Wishing you a Merry Christmas and a Happy New Year

OMNILINK would like to take this opportunity to thank you for your clientele and continued support throughout 2008. We would like to wish you and your families a very safe and happy Christmas and New Year.

Please note that our office will close on Wednesday 24th December and reopen on Monday 5th January. For urgent matters please contact Ed Garvin (0407 273 217) or Philip Caunter (+64 21 350 531).

We hope you find the newsletter informative and useful. Feedback is always welcome.