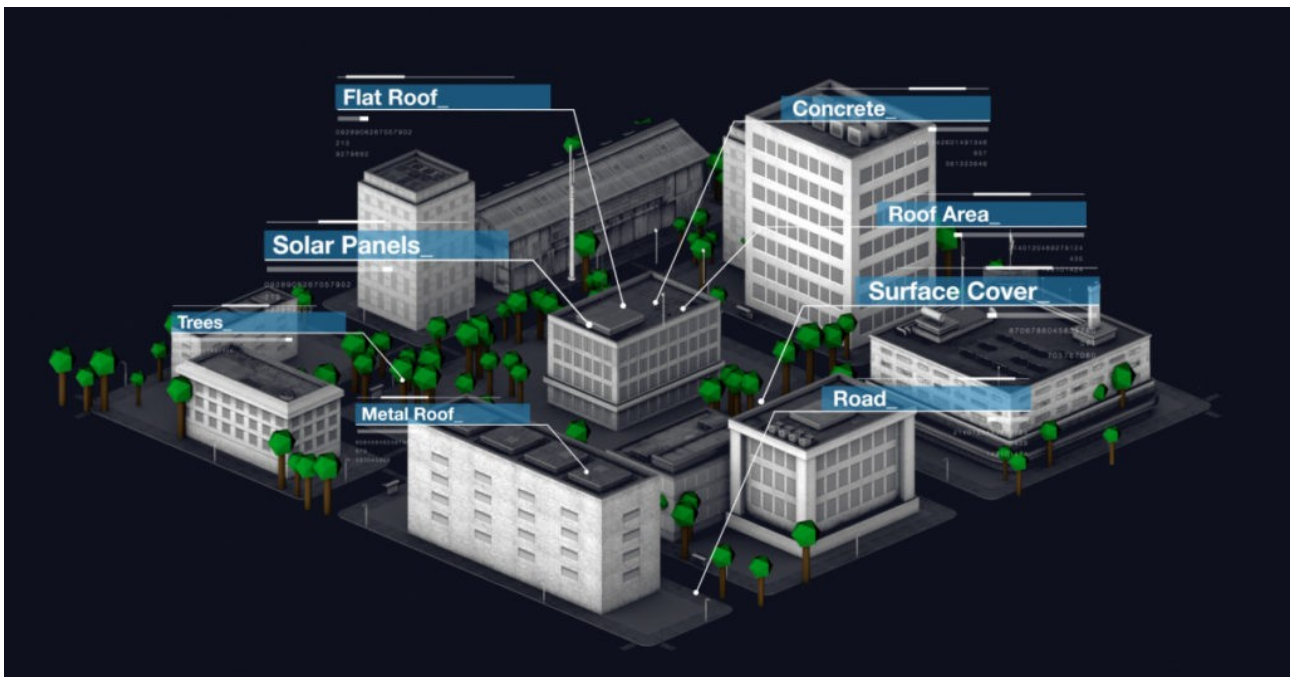


## CASE STUDY

### WSP—Digitising property footprints with Geoscape



**WSP is a global professional services firm that works with governments, businesses, architects and planners to help improve both built and natural environments.**

Adopting an integrated approach, it supports projects from concept to completion with its impressive portfolio boasting iconic landmarks such as China's Shanghai Tower and the World Trade Centre in New York as well as technically-challenging beacons

including Melbourne's Premier Tower and Greenland Centre, a residential tower in downtown Sydney.

Operating across 30 countries globally, it currently has 15 offices dotted around Australasia with the largest of these headquartered in the NSW capital.



WSP partnered with OMNILINK to help create a digital representation of each building in its portfolio. As well as receiving local insights via a two-

dimensional roof outline and additional attributes such as administration boundaries, adjacent swimming pools, tree coverage, solar panels and other geospatial foundations, WSP also obtained key data on 3D attributes such as surface cover, eave height and maximum roof height from the Geoscape suite.

Monica Saralertsophon, a senior acoustic engineer at WSP, said as well as allowing for more detailed analytical insight, incorporating Geoscape into the business had saved her and her team time on digitising important building footprints.

Saralertsophon said she was persuaded to select OMNILINK over other accredited Geoscape resellers owing to the sales team's open communication structure and its superior knowledge of the product at hand, "consulting ability and value proposition".

Any and all technical queries were dealt with efficiently and effectively by the OMNILINK team who were "very pleasant" to deal with, she added.



OMNILINK is the first certified PSMA Cloud Integrator. The OMNILINK team is fully trained as PSMA Cloud Integrators placing us as the ideal partner for government and corporate clients seeking to leverage PSMA Cloud services, including G-NAF Live, to deliver on nationwide projects. With our proven record of success across every sector, OMNILINK now harnesses the capabilities of PSMA Cloud to offer an even more accurate and up to date system for the delivery of address verification and related mapping functions and workflows all contained within a pay as you go model.



Contact OMNILINK to solve your data information puzzle.

**OMNILINK**  
LINKING PEOPLE AND INFORMATION

[www.omnilink.com.au](http://www.omnilink.com.au)

Australia: 1800 651 291 New Zealand 0800 350 531 UK 020 7096 0797 Email: [omnilink@omnilink.com.au](mailto:omnilink@omnilink.com.au)

OFFICES: Sydney | Melbourne | Perth | Christchurch | UK & Ireland

ABOUT OMNILINK: Established in 1987, OMNILINK is the market-leading property and location data management specialist having developed specific expertise and skills in the acquisition, collation and management of data for Government, Education and Business entities. Whether your organisation is upgrading facilities, constructing new buildings or just seeking a better way to manage property information as a corporate resource, OMNILINK can help.

**OMNIDATA - DATA FOR BUSINESS DECISIONS**